



July
2023



Welcome to
Year 1!

Parent Transition Meeting



Meet the Team

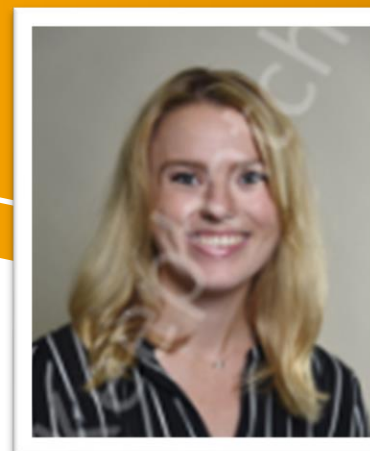
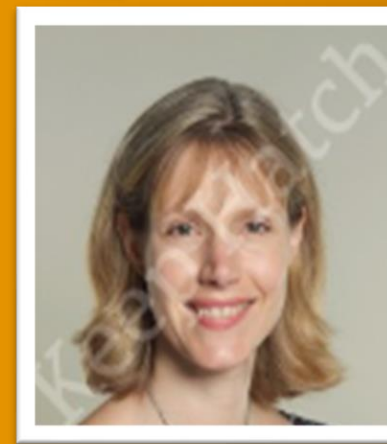




Teachers

Meet our teaching team:

- The KS1 classes are Blackbirds and Robins (Year 1) and Kingfishers and Skylarks (Year 2).
- Mrs Hall and Mrs Douglas teach Y1 Blackbirds.
- Mrs Fletcher and Mrs Fowler teach Y1 Robins.
- Miss Cole is the KS1 leader.
- Mrs Caird is our school SENDCo (Special Educational Needs Coordinator).

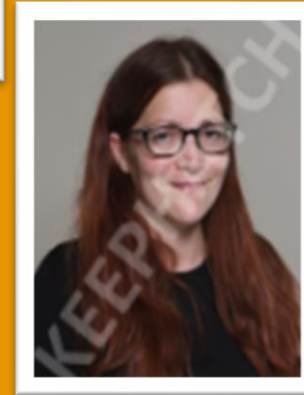
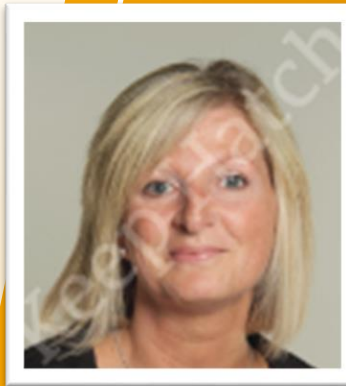




Teaching Assistants

- In Blackbirds and Robins, there will also be Teaching assistants supporting your children.
- This team includes: Miss Potomska, Mrs Hickman, Miss Papierowski, Miss Jacobs, Mrs Li and Miss Mullar.

Please know that we have an 'open door' policy. Do come to us with any questions or queries you may have.





Best Start

There is lots in place to support your children make the best start to Year 1 including:

- Children in school have had chance to visit KS1 classes and areas.
- Lots of opportunities for additional visits.
- Children have received a letter from their new teacher.
- This year, during the Autumn term, children will be learning the KS1 curriculum in a similar way to how the EYFS curriculum is delivered.

If you feel your child is particularly worried about transition, please let us know and we are happy to support further.



All About Year 1





A Week in Year 1

This is an example of what a week in Year 1 might look like. During daily Task Time, there is time for child-initiated learning.

To support children with understanding their routine, a visual timetable will be displayed in each classroom.



	Session 1	Session 2	Session 3	Session 4
Monday	RWI Phonics	Maths	History/ Geography	Task Time
Tuesday	RWI Phonics	English	RE/PE	Task Time
Wednesday	RWI Phonics	Maths	Art/DT	Task Time
Thursday	RWI Phonics	English	Science	Task Time
Friday	RWI Phonics	PE	Music/ Computing	Task Time

Please note that Maths and English sessions and activities will also take place on days when they are not timetabled as the focus subject areas.

PE days will be on Tuesdays and Fridays.



Learning Styles

At Keep Hatch, we understand children learn best in different ways. We also understand that at this young age, children develop well through exploration, challenge and talk. For this reason we will use continuous provision to best meet the needs of all children across the year group.



Continuous provision is when learning opportunities are facilitated and supported within children's independent time. In addition to the input and supported time with their class teacher, children are encouraged to carry on their own learning through play-based and exploratory tasks in a low-risk, high-reward environment.



Learning Styles

Building Confidence, Quality and Independence:

- Maths and English curriculum objectives will be delivered during small group inputs and adult-led learning activities. Enrichment and consolidation will take place alongside this learning during COOL Time (Carrying On Our Learning). This is an opportunity for children to build or consolidate skills.





Learning Styles

Building Confidence, Quality and Independence:

- Child-initiated learning will take place in the afternoon during Task Time. This session will be structured in a similar way to Early Years. This will continue as long as the children need.





Learning Styles

Building Confidence, Quality and Independence:

- Wider curriculum lessons will be delivered as whole class, requiring children to work more independently.
- There will be many opportunities for practical and play-based learning.





Reading

Children continue to learn to read through RWI Phonics.

- As they did in Early Years, children will take reading books home.
- Books will be changed after children have finished learning it in school by your child's reading teacher. An additional book is provided to consolidate skills.
- At the end of Year 1, children take part in a statutory reading assessment called the Phonics Screening Check.
- The pass mark is usually 32/40.



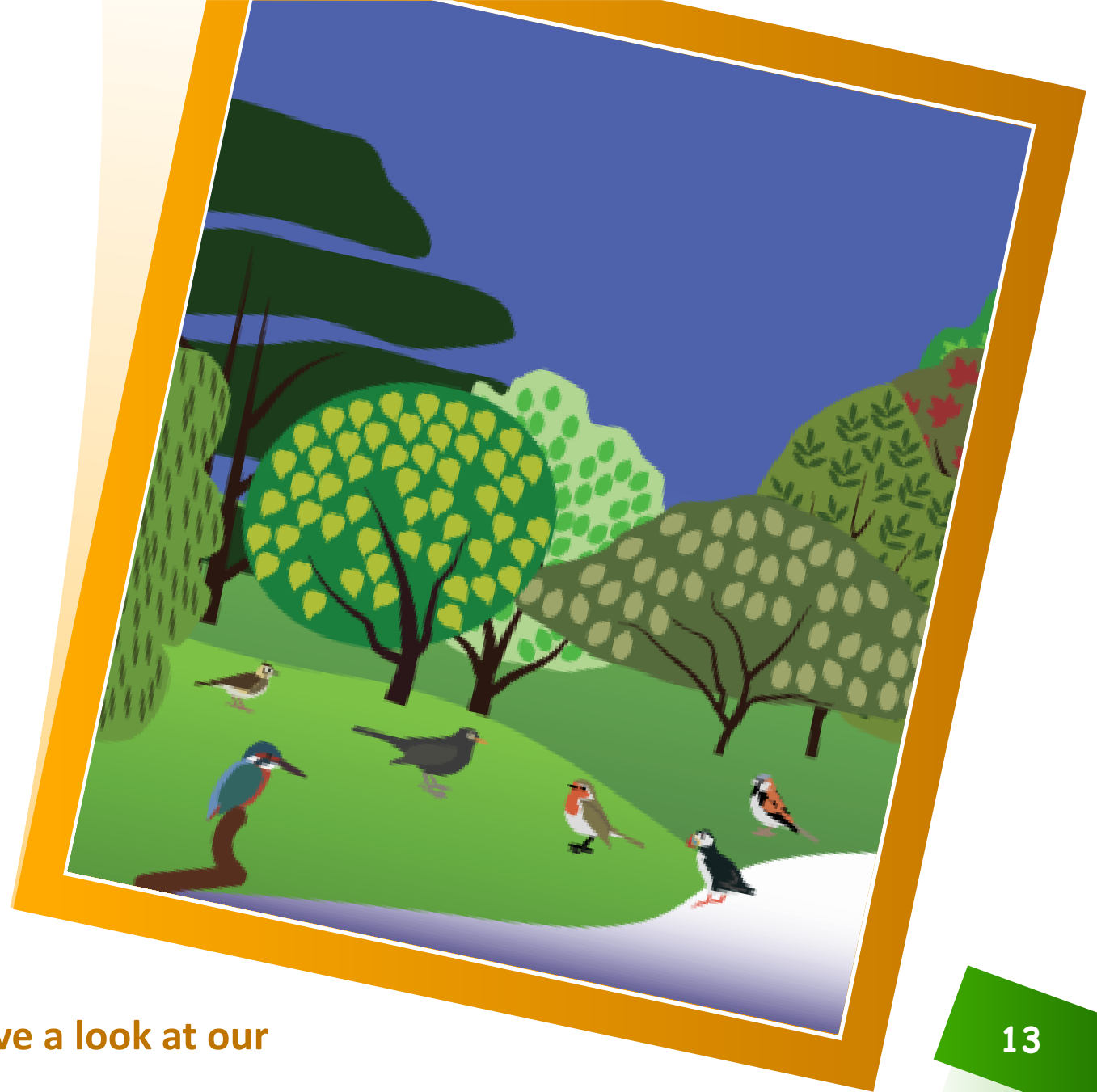
If you have any further questions about RWI phonics or about your child's reading, please let us know.

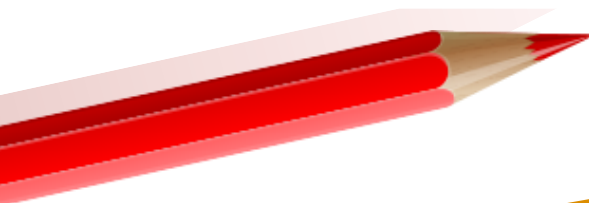
Behaviour

What we do to help your children be the best they can be:

- Promote good behaviour
- School values
- Hatchie points
- PSHE learning
- Conflict resolution

If you have any further questions, please have a look at our behaviour policy on our school website.





Thank You!

Please ask if you have any questions?

